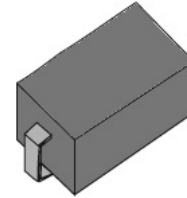


Features

- The plastic package carries Underwriters Laboratory Flammability Classification 94V-0
- For surface mounted applications
- Metal silicon junction, majority carrier conduction
- Low power loss, high efficiency
- Built-in strain relief, ideal for automated placement
- High forward surge current capability
- High temperature soldering guaranteed: 250°C/10 seconds at terminals



DO-214AC/SMA-W

Mechanical Data

- Case: JEDEC DO-214AC molded plastic body
- Terminals: leads solderable per MIL-STD-750, Method 2026
- Polarity: Color band denotes cathode end Mounting
- Position: Any
- Weight: 0.0024 ounce, 0.069 grams

Maximum Ratings & Characteristics

Ratings at 25°C ambient temperature unless otherwise specified.
Single phase half-wave 60Hz, resistive or inductive load, for capacitive load current derate by 20%.

Parameter	Symbols	SS32A -W	SS33A -W	SS34A -W	SS35A -W	SS36A -W	SS38A -W	SS310A -W	SS315A -W	SS320A -W	Unit
Maximum repetitive peak reverse voltage	V _{RRM}	20	30	40	50	60	80	100	150	200	V
Maximum RMS voltage	V _{RMS}	14	21	28	35	42	56	70	105	140	V
Maximum DC blocking voltage at TL (see fig.1)	V _{DC}	20	30	40	50	60	80	100	150	100	V
Maximum average forward rectified current	I _{F(AV)}	3.0									A
Non-repetitive peak forward surge current 8.3 ms single half sine-wave	I _{FSM}	75.0									A
Maximum instantaneous forward voltage at 3.0A	V _F	0.45	0.55	0.70		0.85		0.95			V
@V _{DC} TA= 25°C	I _R				0.5						mA
Maximum reverse current TA=100°C		20			10						
Typical thermal resistance (NOTE 1)	R _{θJA}	88									°C/W
Typical junction capacitance (NOTE 2)	C _j	500			300						pF
Operating junction temperature range	T _j	-65 --- +125			-65 --- +150						°C
Storage temperature range	T _j	-65 --- +150									°C

Note: 1.P.C.B. mounted with 0.2x0.2"(5.0x5.0mm) copper pad areas
2.Measured at 1MHz and applied reverse voltage of 4.0V D.C.

Characteristic Curves

FIG. 1- FORWARD CURRENT DERATING CURVE

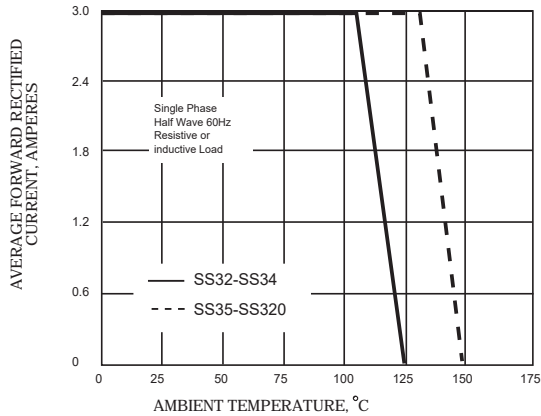


FIG. 2-MAXIMUM NON-REPETITIVE PEAK FORWARD SURGE CURRENT

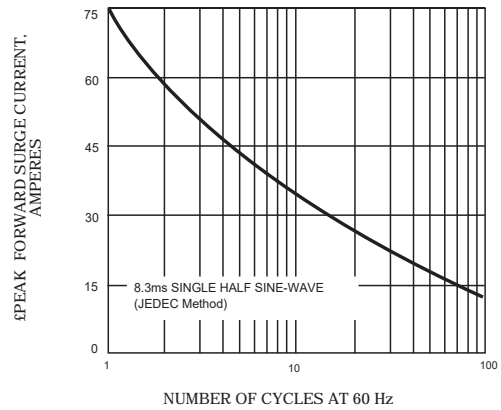


FIG. 3-TYPICAL INSTANTANEOUS FORWARD CHARACTERISTICS

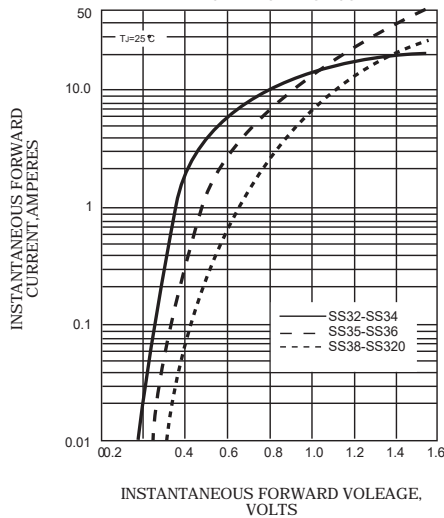


FIG. 4-TYPICAL REVERSE CHARACTERISTICS

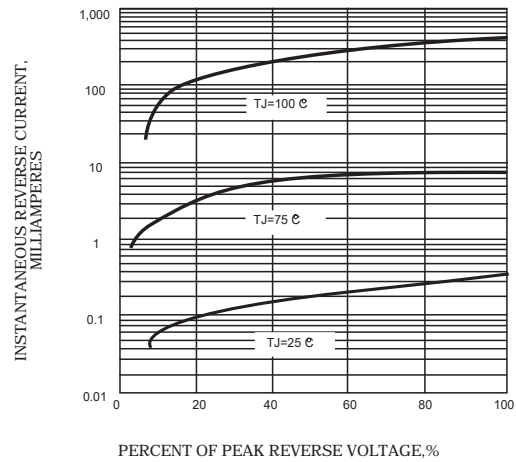


FIG. 5-TYPICAL JUNCTION CAPACITANCE

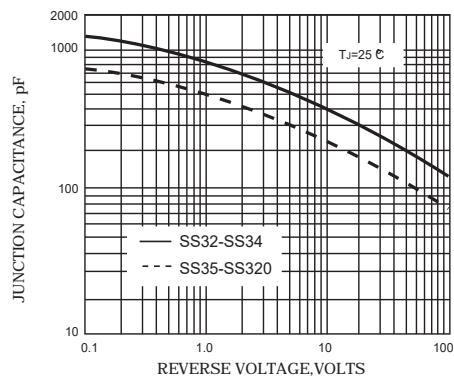
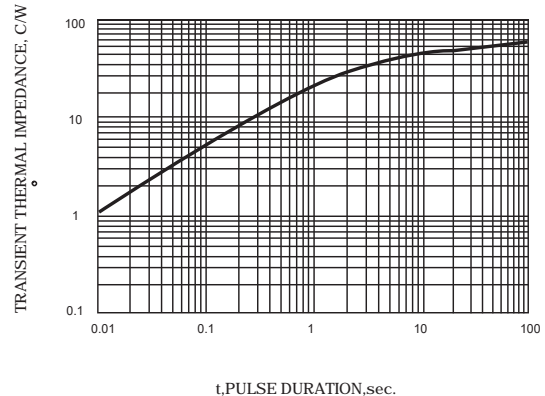
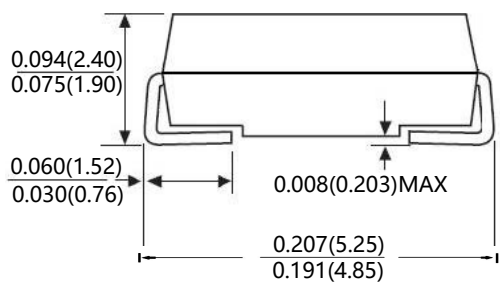
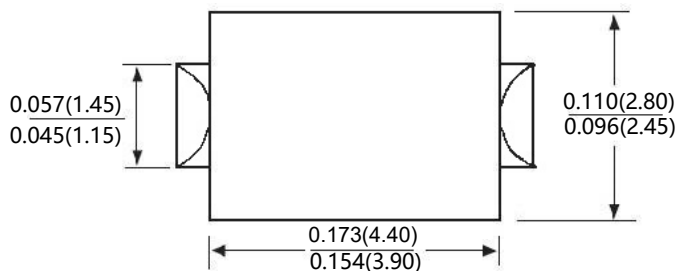


FIG. 6-TYPICAL TRANSIENT THERMAL IMPEDANCE



Package Outline



Unit: inch (mm)

Package Information

Qty: 5,000/Tape and reel