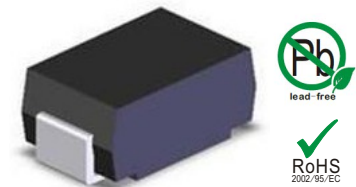


Features

- Low reverse leakage
- High forward surge capability
- High reliability
- High temperature soldering guaranteed: 260 °C / 10seconds
- Lead and body according with RoHS standard
- Green compound with suffix "-F" on Marking



DO-214AC/SMA

Mechanical Data

- Case: DO-214AC Molded plastic
- Epoxy: UL 94V-0 rate flame retardant
- Lead: Pure tin plated, lead free

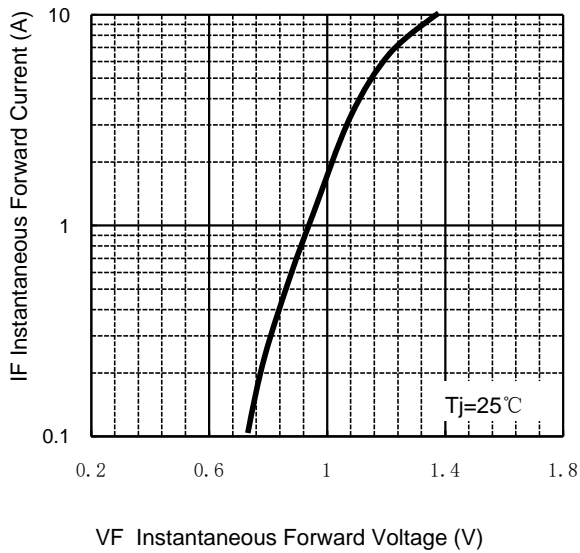
Maximum Ratings & Characteristics

Ratings at 25 °C ambient temperature unless otherwise specified.

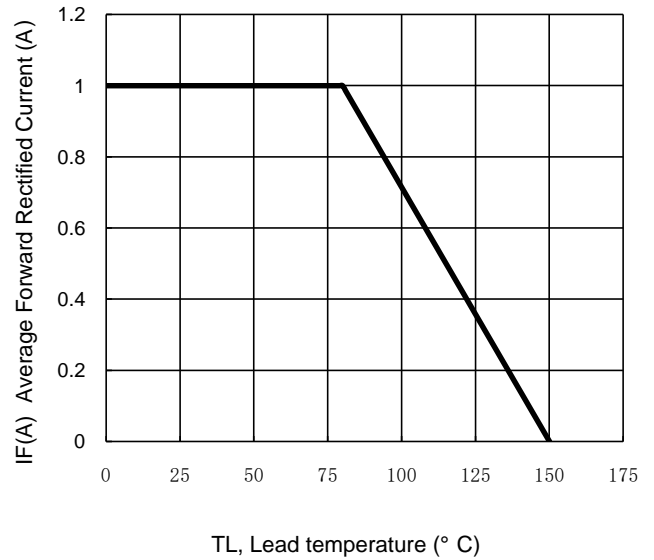
Parameter	Symbols	S1A	S1B	S1D	S1G	S1J	S1K	S1M	S1P	S1T	Unit
Marking	/	S1A	S1B	S1D	S1G	S1J	S1K	S1M	S1P	S1T	/
Maximum repetitive peak reverse voltage	V_{RRM}	50	100	200	400	600	800	1000	1300	1600	V
Maximum RMS voltage	V_{RMS}	35	70	140	280	420	560	700	910	1120	V
Maximum DC blocking voltage	V_{DC}	50	100	200	400	600	800	1000	1300	1600	V
Maximum average forward rectified current	$I_{F(AV)}$	1.0									A
Non-repetitive peak forward surge current 8.3 ms singlehalf sine-wave	I_{FSM}	30									A
@ $I_F=1.0A$ Maximum forward voltage	V_F	1.1									V
@ V_{DC} Maximum reverse current	I_R	5									μA
TA= 25°C TA= 125°C		100									
Typical thermal resistance (Note 1)	$R_{\theta JA}$	85									°C/W
VR=4.0V,f=1MHz Type junction capacitance	C_J	12									pF
Operating junction	T_J	-55 --- +150									°C
Storage temperature rang	T_{STG}	-55 --- +150									°C

Characteristic Curves

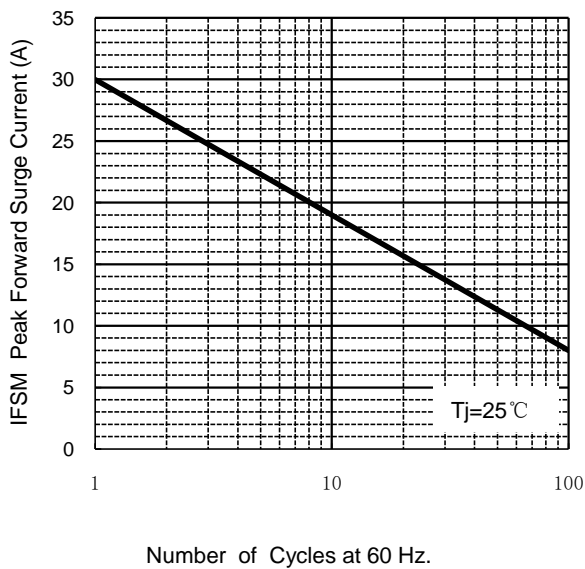
TYPICAL FORWARD CHARACTERISTIC



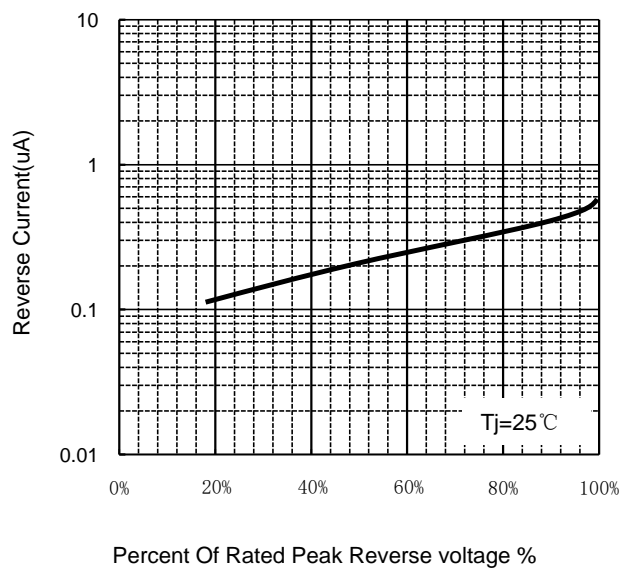
FORWARD CURRENT DERATING CURVE



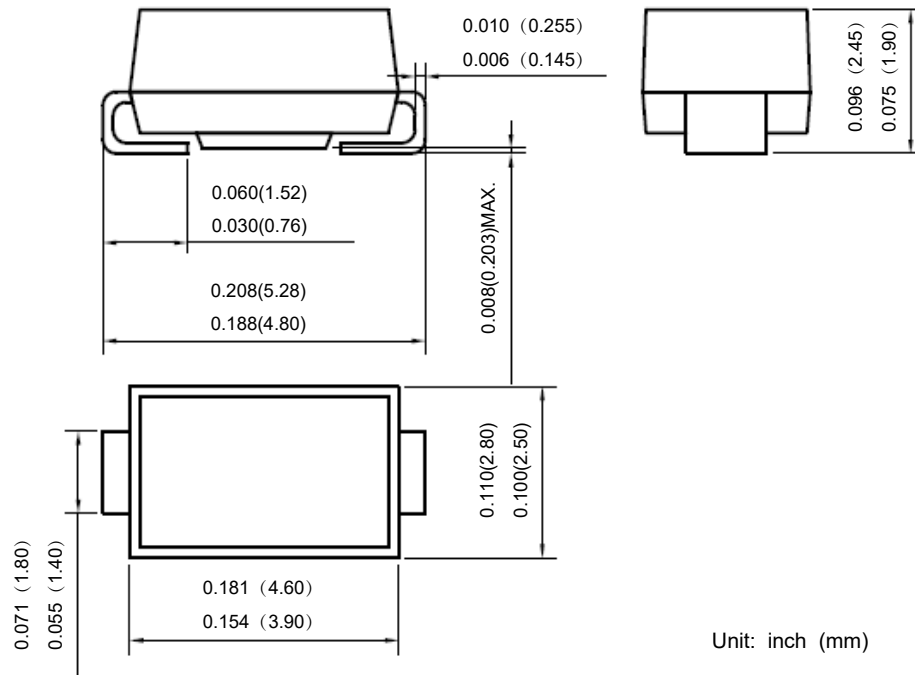
MAXIMUM NON REPETITIVE PEAK FORWARD SURGE CURRENT



TYPICAL REVERSE CHARACTERISTICS



Package Outline



Package Information

Qty: 5,000/Tape and reel