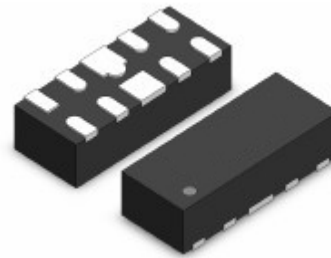


Features

- Up to 4 lines protects
- Ultra low junction capacitance (Max value: 0.5pF)
- Peak Pulse Current (8/20 μ s) MAX : 3A
- Low clamping voltage
- Low leakage current
- Working voltages:5V
- RoHS Compliant



DFN2510-10L

IEC COMPATIBILITY (EN61000-4)

- IEC 61000-4-2 \pm 8kV contact \pm 15kV
- air IEC 61000-4-4 (EFT) 40A (5/50ns)
- IEC 61000-4-5 (Lightning) 3A (8/20 μ s)

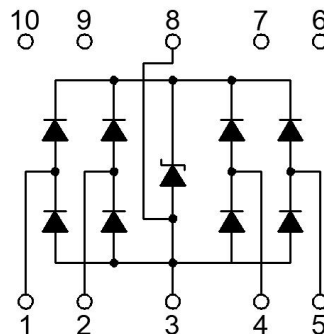
Applications

- Cellular Handsets and Accessories
- Personal Digital Assistants
- Notebooks and Handhelds
- Portable Instrumentation, Digital Cameras
- Peripherals, Audio Players, Industrial Equipment
- Automotive

Mechanical Characteristics

- Package: DFN2510-10L
- Lead Finish: Matte Tin
- Case Material: "Green" Molding Compound.
- UL Flammability Classification Rating94V-0
- Moisture Sensitivity: Level 3 per J-STD-020
- Tape Reel :3000pcs

Schematic & PIN Configuration



DFN2510-10L

Absolute Maximum Rating

Rating	Symbol	Value	Units
Peak Pulse Power ($t_p = 8/20\mu s$)	P_{PPP}	39	Watts
Peak Pulse Current ($t_p = 8/20\mu s$) (note1)	I_{PP}	3	A
ESD per IEC 61000-4-2 (Air) ESD per IEC 61000-4-2 (Contact)	V_{ESD}	± 15 ± 8	kV
Operating Temperature Range	T_J	-55 to + 125	$^{\circ}C$
Storage Temperature Range	T_{stg}	-55 to + 125	$^{\circ}C$

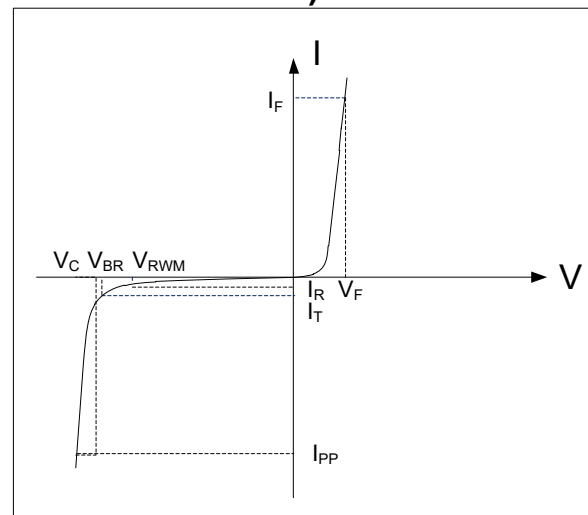
Electrical Characteristics (TA = 25°C)

Parameter	Symbol	Test Condition	Min	Typ	Max	Unit
Reverse Working Voltage	V_{RWM}				5	V
Breakdown Voltage	V_{PT}	$I_T = 1mA$	6		9	V
Reverse Leakage Current	I_R	$V_{RWM} = 5V$			0.5	μA
Clamping Voltage	V_C	$I_{PP} = 1A$ (8 x 20 μs pulse), any I/O pin to ground			10	V
Clamping Voltage	V_C	$I_{PP} = 3A$ (8 x 20 μs pulse), any I/O pin to ground			13	V
Junction Capacitance	C_J	$V_R = 1.5V$, $f = 1MHz$, between I/O pins		0.2	0.3	pF
Junction Capacitance	C_J	$V_R = 1.5V$, $f = 1MHz$, any I/O pin to ground			0.5	pF

Electrical Parameters (TA = 25°C unless otherwise noted)

Symbol	Parameter
I_{PP}	Maximum Reverse Peak Pulse Current
V_C	Clamping Voltage @ I_{PP}
V_{RWM}	Working Peak Reverse Voltage
I_R	Maximum Reverse Leakage Current @ V_{RWM}
V_{BR}	Breakdown Voltage @ I_T
I_T	Test Current

Note: 8/20 μs pulse waveform.



Typical Characteristics

FIG1: Power rating derating curve

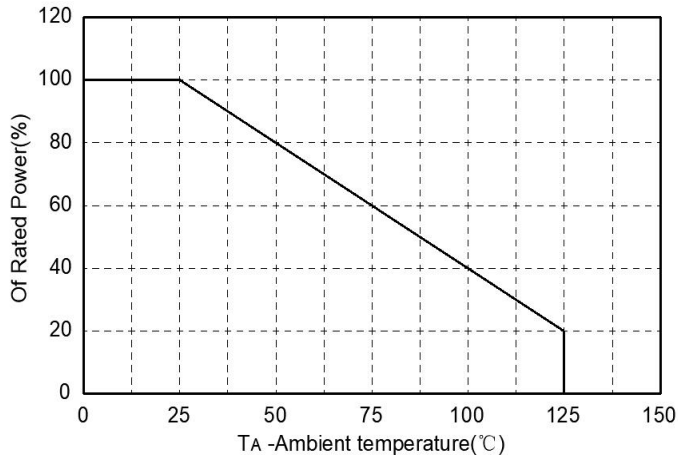


FIG2: pulse Waveform

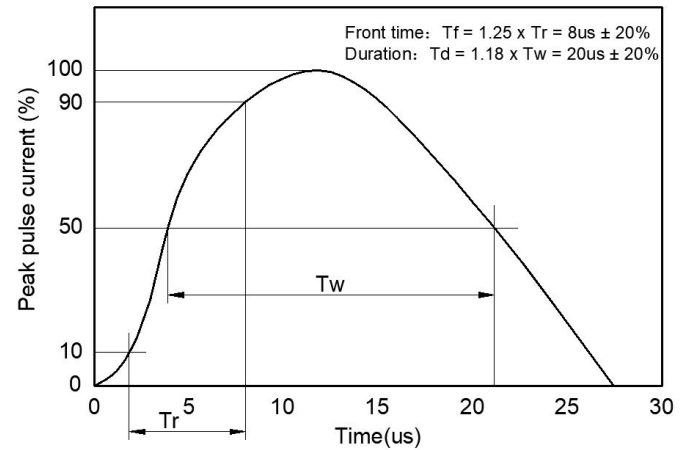


FIG3: Capacitance between terminals characteristics

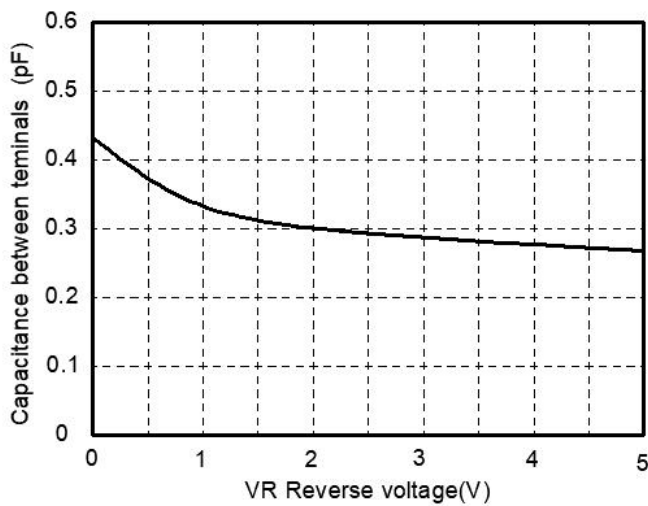
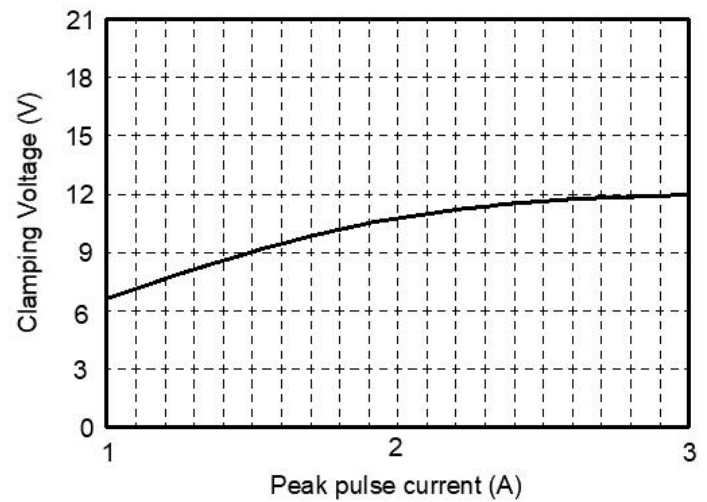
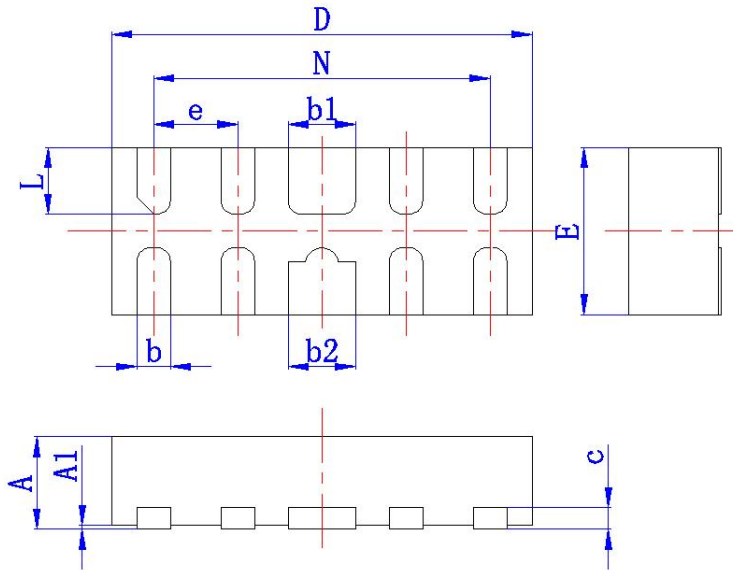


Figure 4: Clamping Voltage vs. Peak Pulse Current

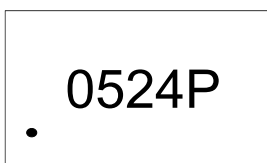


Outline Drawing – DFN2510-10L



Symbol	Dimension in Millimeters	
	min	max
A	0.5	0.65
A1	0	0.05
D	2.4	2.6
E	0.9	1.1
e	(0.5)	
N	(2.0)	
b	0.15	0.25
b1	0.35	0.5
b2	0.35	0.5
L	0.35	0.45

Marking



0524P=Marking Code
• = Pin1 Logo

Ordering information

Order code	Package	Base qty	Delivery mode
PTN2510L05S5CA3	DFN2510-10L	3k	Tape and reel